

# CONSTRUCTION PARTS INC.®

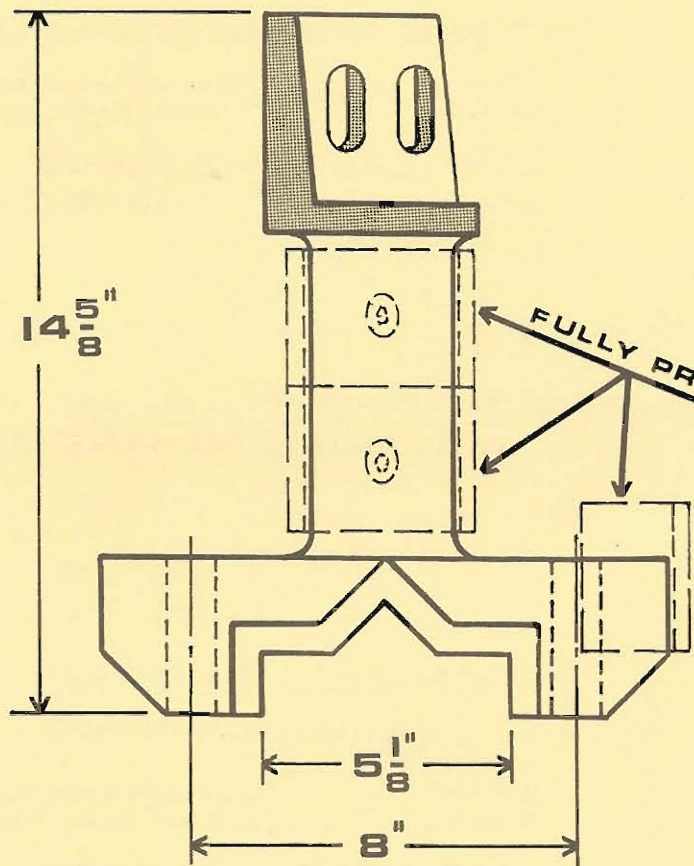
P.O. BOX 31207  
CLEVELAND, OHIO 44131

ORDER BY PHONE **TOLL FREE**  
**1-800-222-1141**  
Ohio 1-800-338-5608  
FAX 216-524-5682 Telephone 216-524-7100

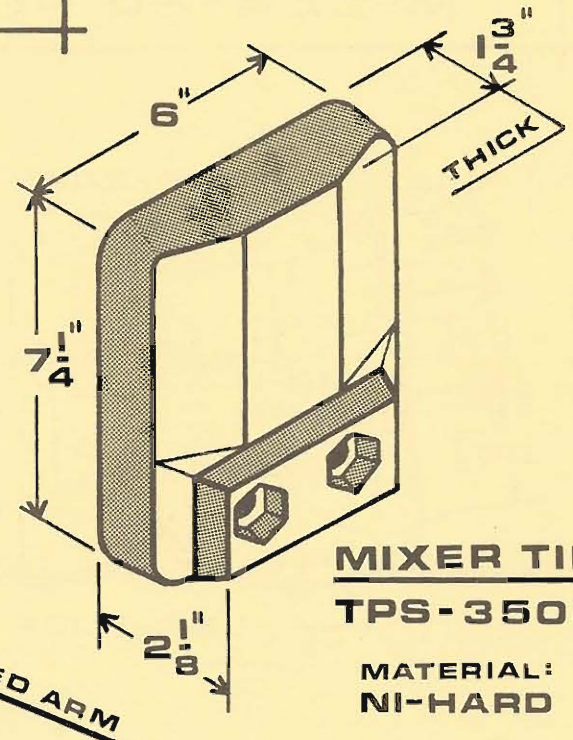
AVAILABLE REPLACEMENT PARTS  
FOR  
**M<sup>c</sup>CARTER PLANTS**

## MIXER PARTS...

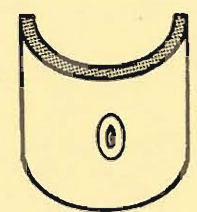
(4,000 - 5,000 - 6,000 LB. PLANTS)



**MIXER ARMS**  
SHK-3433-R R.H. ARM  
SHK-3433-L L.H. ARM



**MIXER TIP**  
**TPS-3500**  
MATERIAL:  
NI-HARD



**ARM SHIELD**  
**MXP-7146**  
(3 REQ'D PER ARM)

REPLACEMENT FOR  
D.E.M. PART NO.  
413000 (M-205) (M-1011-B)  
413500 (M-206) (M-1011-A)

# CONSTRUCTION PARTS INC.®



ORDER  
BY PHONE

**TOLL FREE**  
**1-800-222-1141**

Ohio 1-800-338-5608

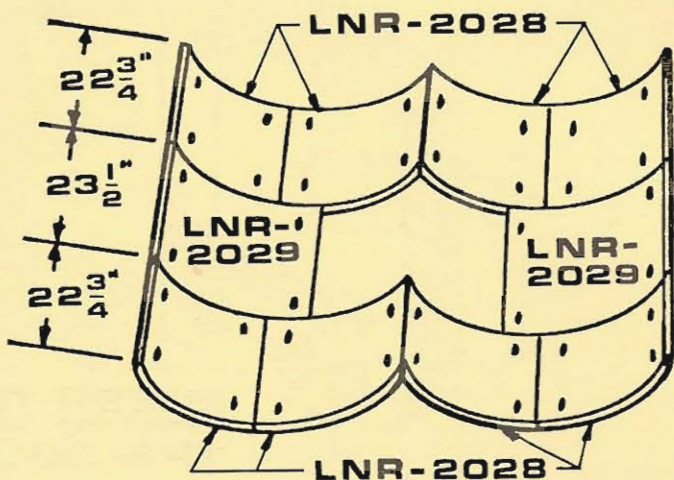
FAX 216-524-5682

Telephone 216-524-7100

AVAILABLE REPLACEMENT PARTS  
FOR  
**M<sup>c</sup>CARTER PLANTS**

## • SHELL LINERS

(4,000/5,000 LB.  
6,000 LB. MIXERS)

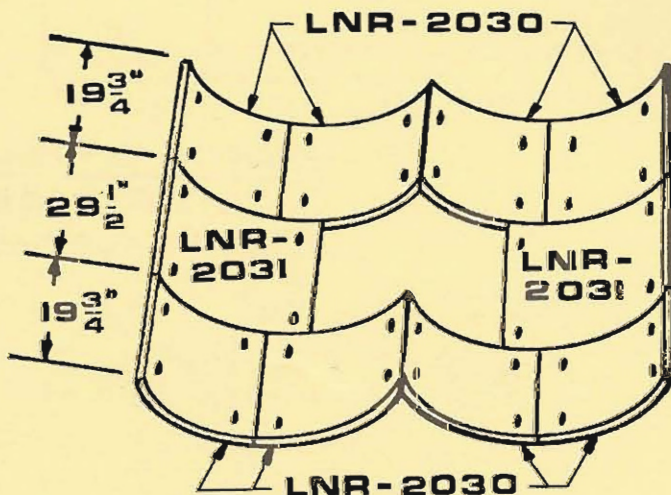


## SHELL LINERS

(4,000/5,000 LB. MIXERS)

C.P.I. PART No.	REPLACEMENT FOR O.E.M. PART No.
LNR-2028	533000
LNR-2029	533500

**MATERIAL: NI-HARD**



## SHELL LINERS

(6,000 LB. MIXERS)

C.P.I. PART No.	REPLACEMENT FOR O.E.M. PART No.
LNR-2030	534000
LNR-2031	534500

"YOUR HEADQUARTERS FOR ASPHALT PLANT REPLACEMENT PARTS"

# C ONSTRUCTION P ARTS I NC.®



ORDER  
BY PHONE

TOLL FREE  
1-800-222-1141

Ohio 1-800-338-5608

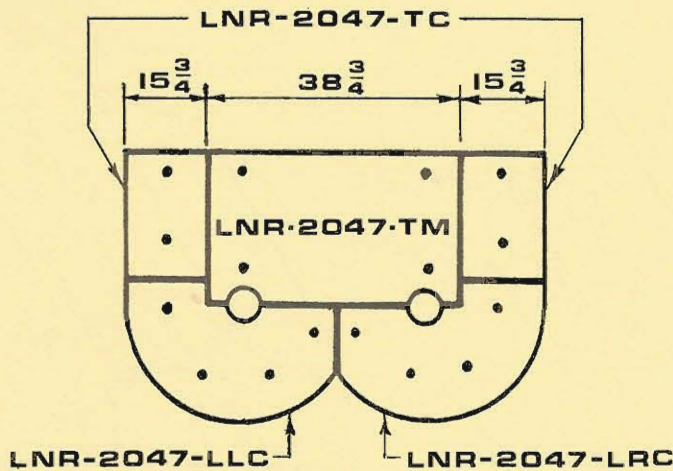
FAX 216-524-5682

Telephone 216-524-7100

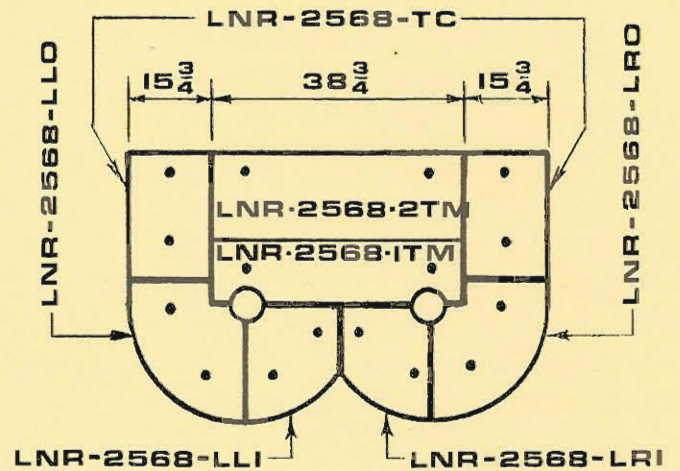
AVAILABLE REPLACEMENT PARTS  
FOR  
M<sup>c</sup>CARTER PLANTS

## • END LINERS

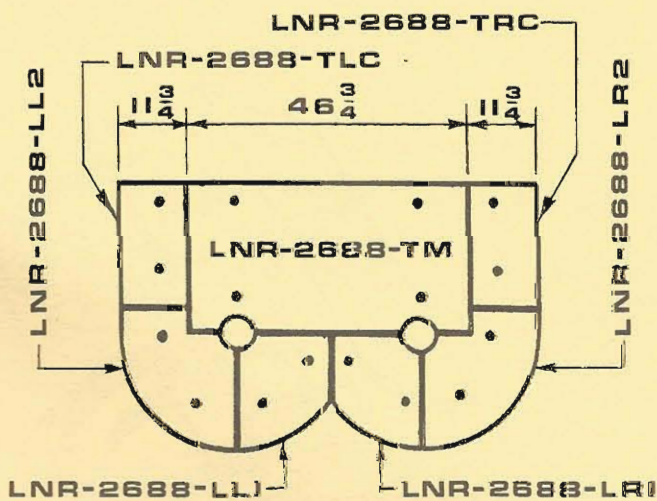
(4,000 / 5,000 LB.  
6,000 LB. MIXERS)



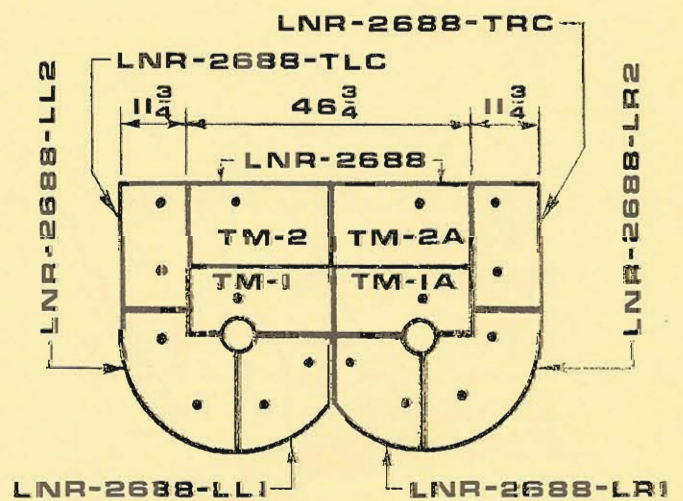
MATERIAL: 3/8 THK. A.R. STEEL



MATERIAL: 5/8 THK. NI-HARD



MATERIAL: 3/8 THK. A.R. STEEL



MATERIAL: 5/8 THK. NI-HARD

"YOUR HEADQUARTERS FOR ASPHALT PLANT REPLACEMENT PARTS"

# CONSTRUCTION PARTS INC.®



ORDER  
BY PHONE

TOLL FREE  
**1-800-222-1141**

Ohio 1-800-338-5608

FAX 216-524-5682

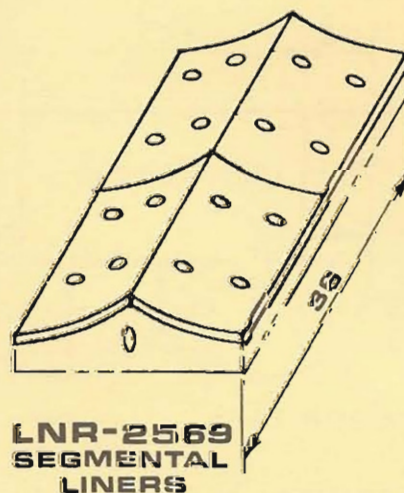
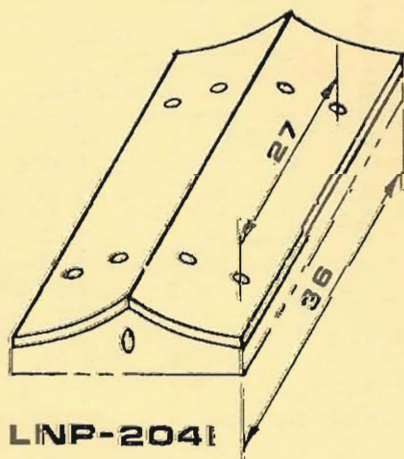
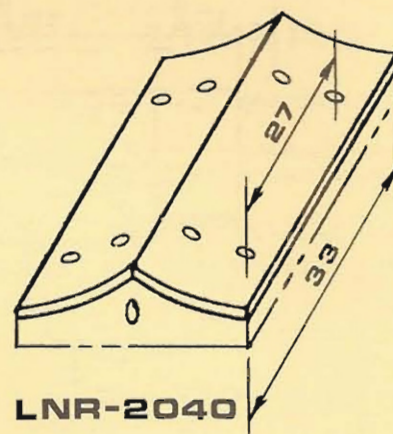
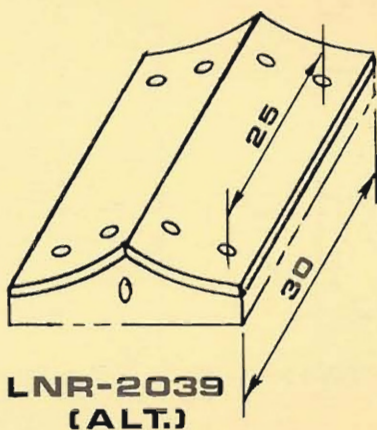
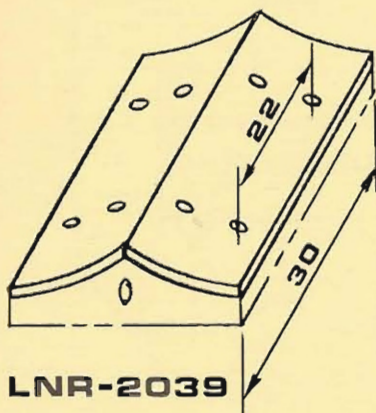
Telephone 216-524-7100

AVAILABLE REPLACEMENT PARTS  
FOR  
**M<sup>c</sup>CARTER PLANTS**

## GATE LINERS

(4,000/5,000 LB.  
6,000 LB. MIXERS)

MATERIAL: NI-HARD



"YOUR HEADQUARTERS FOR ASPHALT PLANT REPLACEMENT PARTS"

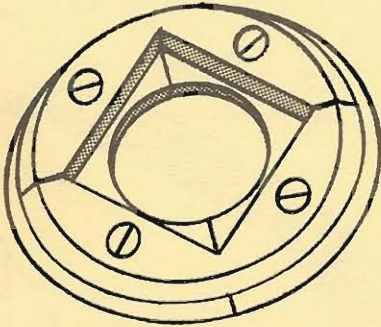


ORDER BY PHONE **TOLL FREE 1-800-222-1141**  
Ohio 1-800-338-5608  
FAX 216-524-5682 Telephone 216-524-7100

AVAILABLE REPLACEMENT PARTS  
FOR  
M<sup>c</sup>CARTER PLANTS

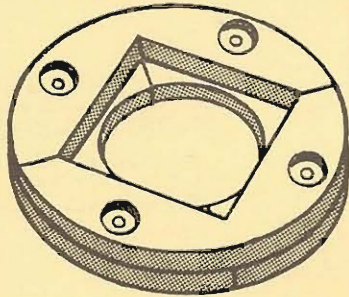
# MIXER COLLAR ASSEMBLY

(ALL SIZE PLANTS)



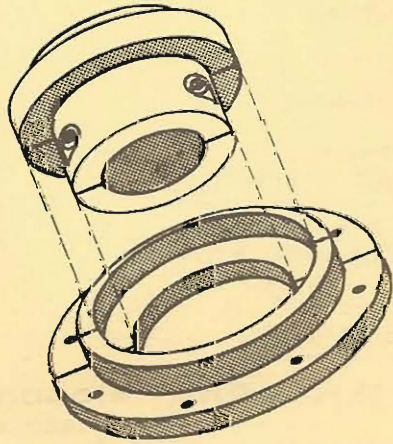
**MXP-7176 MIXER COLLAR ASS'Y**  
(Steel-Machined)  
O.E.M. #423500  
(M-1008)

**MXP-7011 MIXER COLLAR ASS'Y**  
(Steel-Machined)  
O.E.M. #424000  
O.E.M. #424500



**MXP-7009 MIXER COLLAR ASS'Y**  
(Cast Type)  
For 3/8" Thick End Liners  
O.E.M. #422000  
(M-1008)

**MXP-7010 MIXER COLLAR ASS'Y**  
(Cast Type)  
For 5/8" Thick End Liners  
O.E.M. #422000



**MXP-7215 MIXER COLLAR ASS'Y**  
(Steel-Machined)  
O.E.M. #425500

**MXP-7216 MIXER COLLAR ASS'Y**  
(Steel-Machined)  
O.E.M. #425000

# C ONSTRUCTION P ARTS I NC.®



ORDER  
BY PHONE

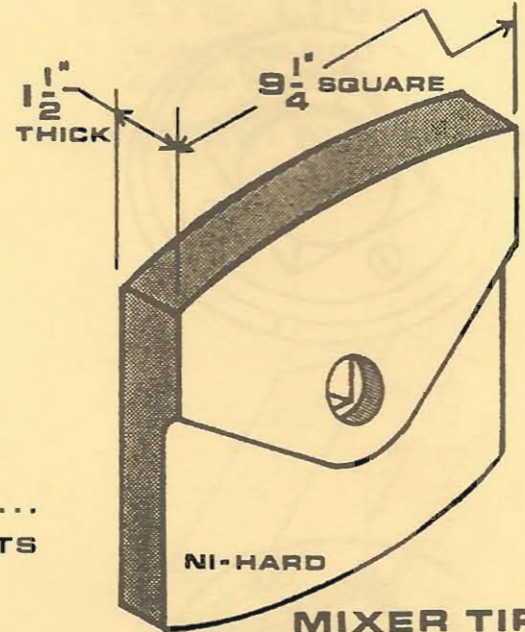
TOLL FREE  
**1-800-222-1141**

Ohio 1-800-338-5608

FAX 216-524-5682

Telephone 216-524-7100

AVAILABLE REPLACEMENT PARTS  
FOR  
**M<sup>c</sup>CARTER PLANTS**



**MIXER TIP**  
**TPS-3501**

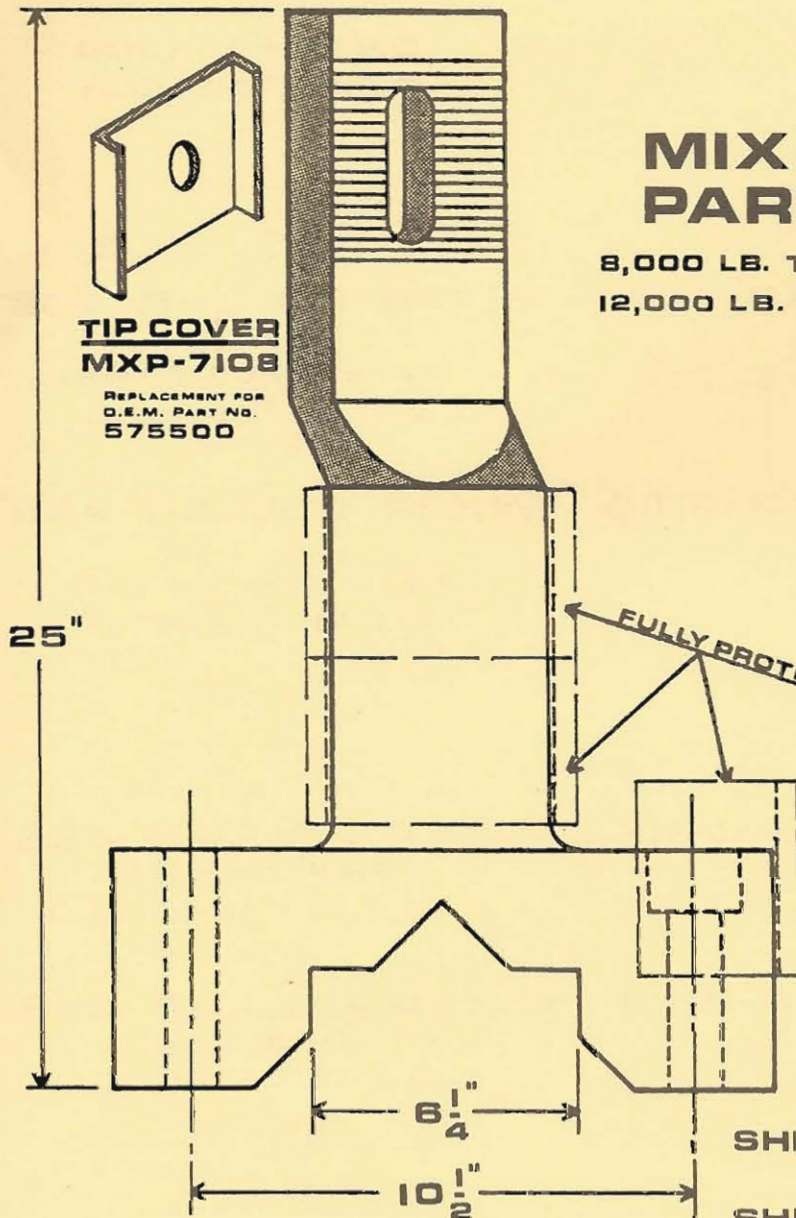
REPLACEMENT FOR  
O.E.M. PART NO.  
**575000**  
(M-1017)

## MIXER PARTS

8,000 LB. THRU....  
12,000 LB. PLANTS

**TIP COVER**  
**MXP-7108**

REPLACEMENT FOR  
O.E.M. PART NO.  
**575500**



**ARM SHIELD**  
**MXP-7192**  
(3 REQ'D PER ARM)

## MIXER ARMS

**SHK-3434-R R.H. ARM 415000**  
(M-1000-A)

**SHK-3434-L L.H. ARM 415500**  
(M-1000-B)

"YOUR HEADQUARTERS FOR ASPHALT PLANT REPLACEMENT PARTS"

# C ONSTRUCTION P ARTS I NC.®



ORDER  
BY PHONE

**TOLL FREE**  
**1-800-222-1141**

Ohio 1-800-338-5608

FAX 216-524-5682

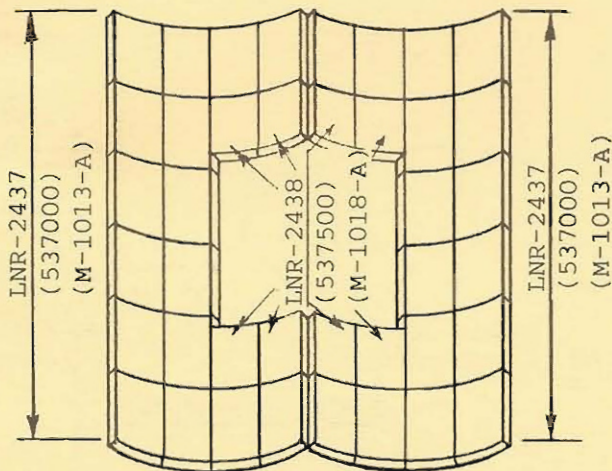
Telephone 216-524-7100

AVAILABLE REPLACEMENT PARTS  
FOR  
**M<sup>c</sup>CARTER PLANTS**

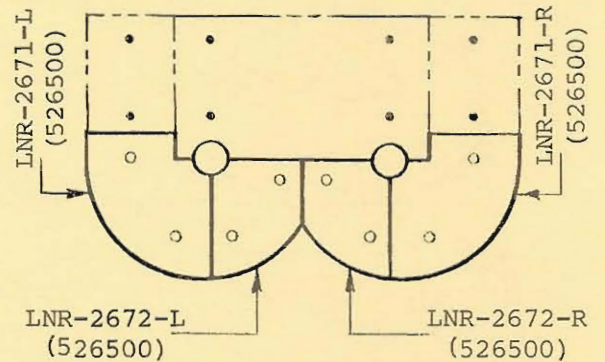
## MIXER LINERS

(8,000/10,000 LB.  
12,000 LB. MIXERS)

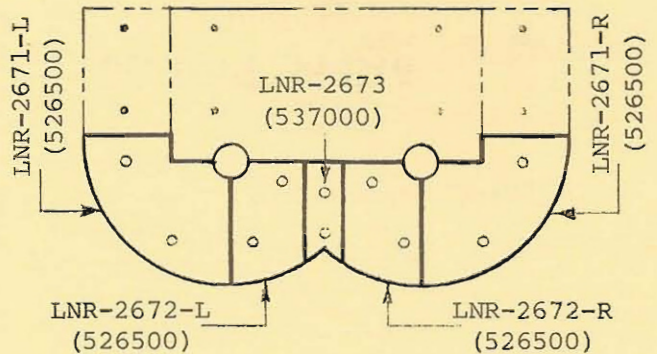
**MATERIAL: NI-HARD**



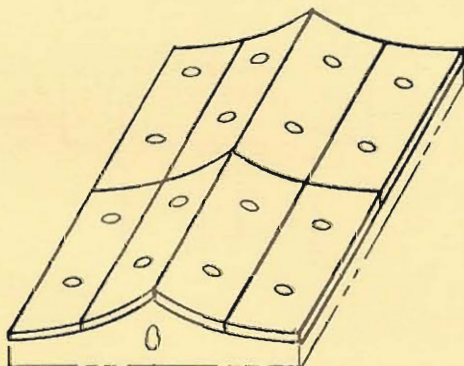
**SHELL LINERS**



**END LINERS**



**END LINERS**



LNR-2592  
(517000)

**GATE LINERS**

McCARTER END LINERS

<u>C.P.I.</u> <u>PART NO.</u>	<u>DESCRIPTION</u>	<u>McCARTER NO.</u>
LNR-2622	End Liner	#527000 (M-1035-A)
LNR-2623-R	R.H. End Liner	#527500 (M-1035-B)
LNR-2623-L	L.H. End Liner	#527500 (M-1035-C)

"YOUR HEADQUARTERS FOR ASPHALT PLANT REPLACEMENT PARTS"

# CONSTRUCTION PARTS INC.®



ORDER  
BY PHONE

**TOLL FREE**  
**1-800-222-1141**

Ohio 1-800-338-5608

FAX 216-524-5682

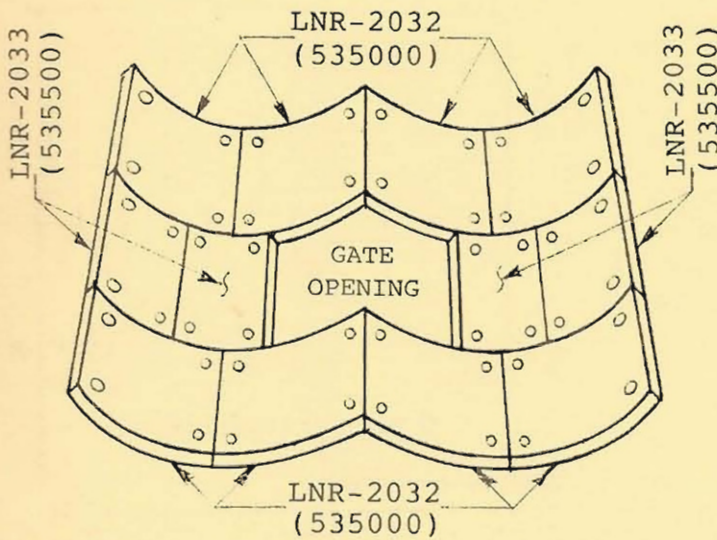
Telephone 216-524-7100

AVAILABLE REPLACEMENT PARTS  
FOR  
**M<sup>c</sup>CARTER PLANTS**

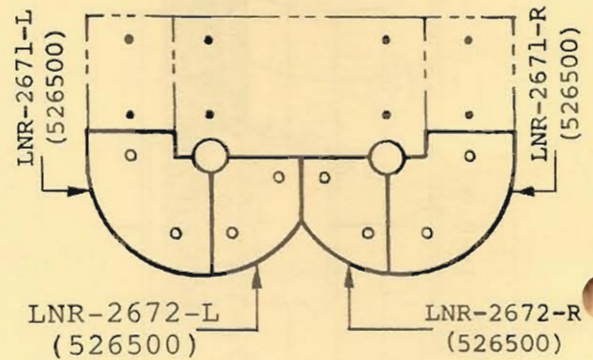
## MIXER LINERS

(8,000 LB. MIXERS)

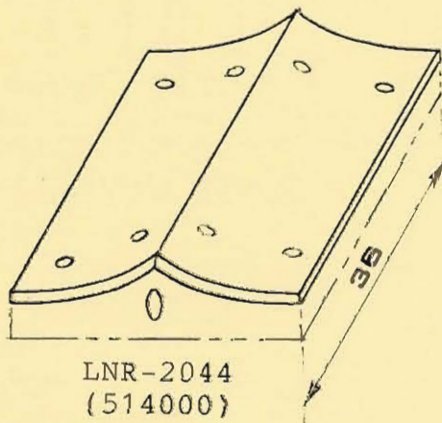
**MATERIAL: NI-HARD**



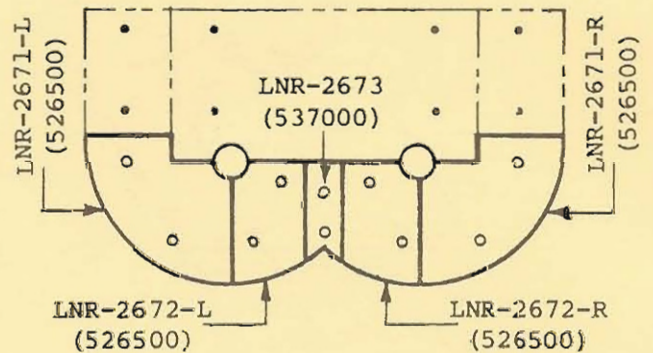
**SHELL LINERS**



**END LINERS**



**GATE LINERS**



**END LINERS**

"YOUR HEADQUARTERS FOR ASPHALT PLANT REPLACEMENT PARTS"





ORDER  
BY PHONE

TOLL FREE  
1-800-222-1141

Ohio 1-800-338-5608

FAX 216-524-5682

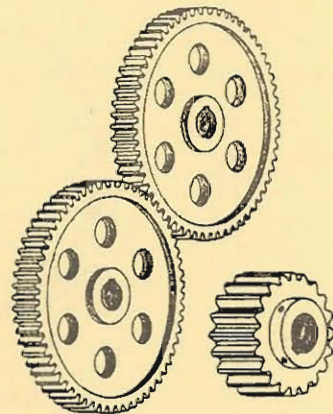
Telephone 216-524-7100

AVAILABLE REPLACEMENT PARTS  
FOR  
M<sup>c</sup>CARTER PLANTS

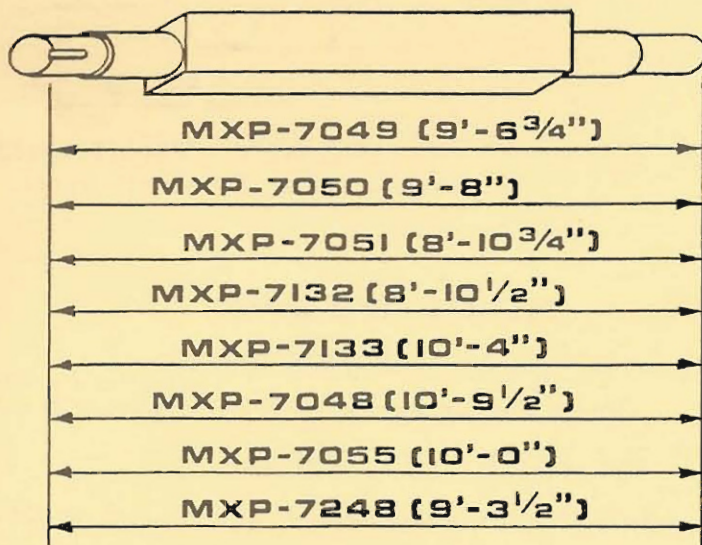
## MIXER PARTS

### MIXER GEARS

C.P.I. PART No.	PART DESCRIPTION	REPLACEMENT FOR O.E.M. PART No.
TRP-148	84 T. Mixer Gear	327000
TRP-151	72 T. Mixer Gear	326000
TRP-121	60 T. Mixer Gear	325000
TRP-118	60 T. Mixer Gear	324000
TRP-152	50 T. Mixer Gear	(3,000# Mixer)
TRP-149	14 T. Pinion Gear	315000



### MIXER SHAFTS



REPLACEMENT FOR  
O.E.M. PART No.

558500

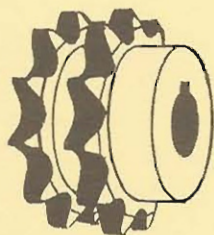
557400

558000

4,000/5,000  
6,000 LB. MIXERS

8,000/10,000  
12,000 LB. MIXERS

### MIXER SPROCKETS



C.P.I. PART No.	PART DESCRIPTION	REPLACEMENT FOR O.E.M. PART No.
MXP-7269	16 T. Drive Sprocket	851500
MXP-7270	17 T. Drive Sprocket	853500
MXP-7271	60 T. Driven Sprocket	857000
MXP-7272	16 T. Drive Sprocket	876000
MXP-7273	60 T. Driven Sprocket	876500



ORDER  
BY PHONE

TOLL FREE  
1-800-222-1141

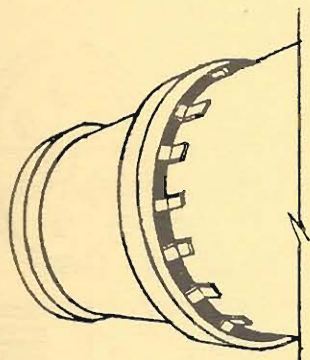
Ohio 1-800-338-5608

FAX 216-524-5682

Telephone 216-524-7100

AVAILABLE REPLACEMENT PARTS  
FOR  
M<sup>C</sup>CARTER PLANTS

**DRYER PARTS**

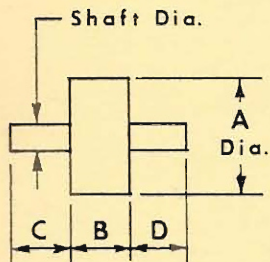


**DRYER TIRES**

C.P.I. PART No.	PART DESCRIPTION	REPLACEMENT FOR O.E.M. PART No.
DRP-4654	Dryer Tire (78" Dryer)	931000
DRP-4655	Dryer Tire (84" Dryer)	931500
DRP-4656	Dryer Tire (84" Dryer)	931700
DRP-4657	Dryer Tire (96" Dryer)	932000

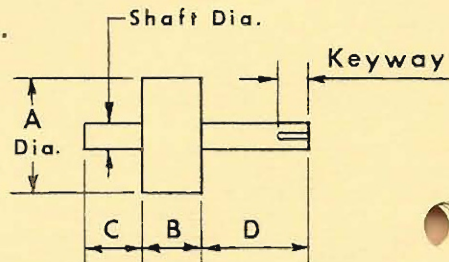
**DRYER TRUNNIONS**

Dimensions needed to obtain Quote.

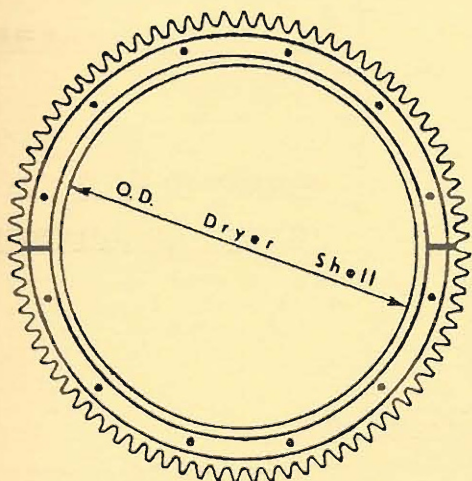


**PLAIN TRUNNION**  
(For Gear Drive)

- A \_\_\_\_\_ Trunnion Diameter
- B \_\_\_\_\_ Trunnion Face (Width)
- C \_\_\_\_\_ Shaft Projection
- D \_\_\_\_\_ Shaft Projection



**PLAIN TRUNNION**  
(For Trunnion Drive)



**RING GEARS**

C.P.I. PART No.	PART DESCRIPTION	REPLACEMENT FOR O.E.M. PART No.
TRP-259	162 Tooth Ring Gear	
TRP-421	176 Tooth Ring Gear	331000
TRP-108	204 Tooth Ring Gear	333000

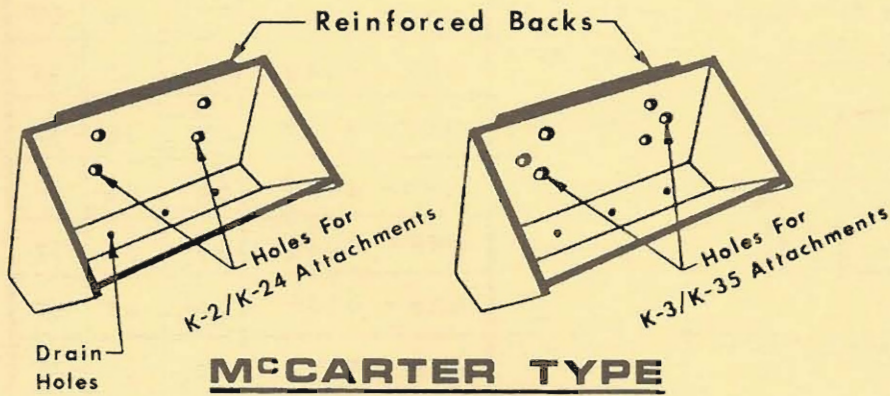


**DRYER DRIVE PINIONS**

C.P.I. PART No.	PART DESCRIPTION	REPLACEMENT FOR O.E.M. PART No.
TRP-115	21 Tooth Pinion	312000
TRP-260	23 Tooth Pinion	313000
TRP-423	29 Tooth Pinion	316000

**ELEVATOR**

**STEEL FABRICATED ELEVATOR BUCKETS**



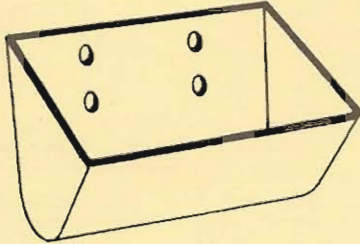
**McCARTER TYPE**  
**ELEVATOR BUCKETS**

C.P.I. PART No.	REPLACEMENT FOR O.E.M. PART No.
HEB-5059	915000
HEB-5060 (ET)	915000
HEB-5061	915500
HEB-5062 (ET)	915500
HEB-5063 (ET)	916000
HEB-5064 (ET)	916500

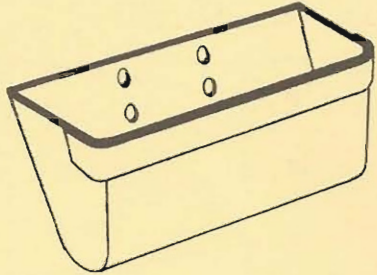
**STANDARD TYPE**  
**ELEVATOR BUCKETS**

**All Styles and Sizes**

- Style "A" Plain Bucket
- Style "AA" Bucket w/Reinforced Lip
- Style "AARB" Bucket w/Reinforced Lip and Back (Not Shown)



Style "A"

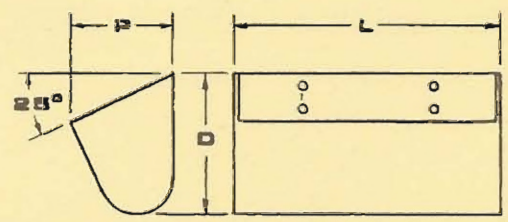


Style "AA" (with reinforcing strip)

Size of Buckets			Cap. Cu. Ft.
L	P	D	
16	6	6 1/4	.191
18	6	6 1/4	.216
12	7	7 1/4	.201
13	7	7 1/4	.219
14	7	7 1/4	.237
16	7	7 1/4	.272
18	7	7 1/4	.307
20	7	7 1/4	.342
12	8	8 1/4	.235
14	8	8 1/4	.279
16	8	8 1/4	.323
18	8	8 1/4	.367
20	8	8 1/4	.411
22	8	8 1/4	.455
24	8	8 1/4	.499
16	9	9 1/4	.372
18	9	9 1/4	.405
20	9	9 1/4	.438
24	9	9 1/4	.504
18	10	10 1/2	.443
20	10	10 1/2	.491
22	10	10 1/2	.541
24	10	10 1/2	.590
30	10	10 1/2	.740

**To Obtain Quote:**

- 1 Style Bucket \_\_\_\_\_
- 2 Size Bucket \_\_\_\_\_ (Thickness \_\_\_\_\_)
- 3 'K' Attachment \_\_\_\_\_ (Chain Size \_\_\_\_\_)
- 4 With \_\_\_\_\_ Or Without \_\_\_\_\_ Drain Holes





ORDER  
BY PHONE

TOLL FREE  
1-800-222-1141

Ohio 1-800-338-5608

FAX 216-524-5682

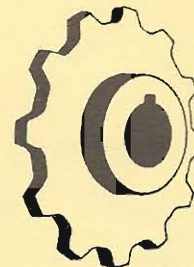
Telephone 216-524-7100

AVAILABLE REPLACEMENT PARTS  
FOR  
M<sup>c</sup>CARTER PLANTS

## SPROCKETS

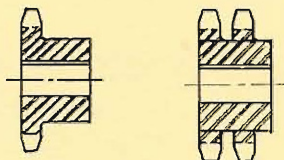
### ELEVATOR CHAIN SPROCKETS

C.P.I. PART No.	PART DESCRIPTION	REPLACEMENT FOR O.E.M. PART No.
HEP-5510	16 Tooth Sprocket	843000
HEP-5511	14 Tooth Sprocket	843500
HEP-5512	12 Tooth Sprocket	843600

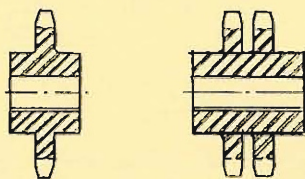


### ELEVATOR DRIVE CHAIN SPROCKETS

C.P.I. PART No.	PART DESCRIPTION	REPLACEMENT FOR O.E.M. PART No.
HEP-5513	16 Tooth Sprocket	843700
HEP-5514	60 Tooth Sprocket	846000
HEP-5515	70 Tooth Sprocket	847000
HEP-5516	60 Tooth Sprocket	847500
HEP-5517	84 Tooth Sprocket	848000
HEP-5518	18 Tooth Sprocket	850000
HEP-5519	16 Tooth Sprocket	851000

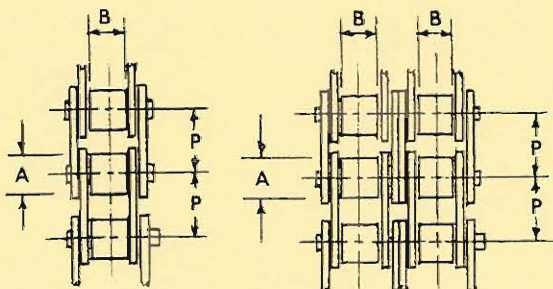


Type "B"  
Hub - One Side



Type "C"  
Hub - Both Sides

### ROLLER DRIVE CHAIN



Single  
Strand

Double  
Strand

C.P.I. PART No.	PITCH	ROLLER		REPLACEMENT FOR O.E.M. PART No.
		DIA. A	WIDTH B	
<b>ROLLER CHAIN - Single Strand</b>				
DCH-60	3/4	15/32	1/2	813000
DCH-80	1	5/8	5/8	816000
DCH-100	1 1/4	3/4	3/4	815000
DCH-120	1 1/2	7/8	1	814000
<b>ROLLER CHAIN - Double Strand</b>				
DCH-140-2	1 3/4	1	1	812000
DCH-200-2	2 1/2	1 9/16	1 1/2	816500