

# C O N S T R U C T I O N

# P A R T S

# I N C. ®

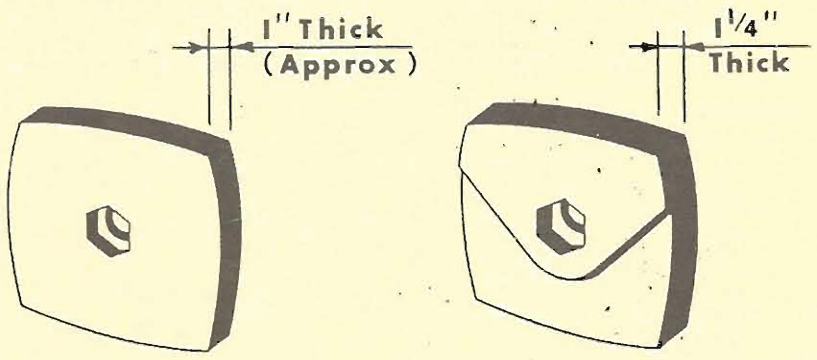
P.O. BOX 31207  
 CLEVELAND, OHIO 44131

ORDER BY PHONE **TOLL FREE**  
**1-800-222-1141**  
 Ohio 1-800-338-5608  
 FAX 216-524-5682 Telephone 216-524-7100

AVAILABLE REPLACEMENT PARTS  
 FOR  
**C.M.I.(SIMPLICITY) PLANTS**

## MIXER TIPS

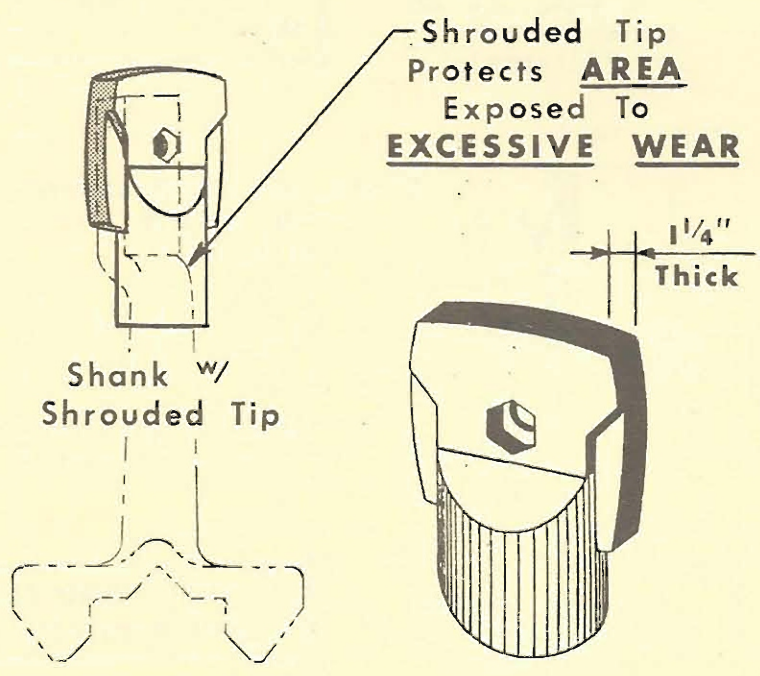
MATERIAL: NI-HARD



O.E.M. or Others

C.P.I. PART No.	REPLACEMENT FOR O.E.M. PART No.
TPS-3504	F-553 (G-553) 305-00055-0000
TPS-3505	F-213 (G-213) 305-00015-0000

## C.P.I. "Extra Thick" TIP



C.P.I. PART No.	REPLACEMENT FOR O.E.M. PART No.
TPS-3594	F-553 (G-553)
TPS-3596	F-213 (G-213)

## C.P.I. "Exclusive" SHROUDED TIP (Mixer Arm Protector)

**C**ONSTRUCTION

**P**ARTS  
**I**NC.®



ORDER  
BY PHONE

TOLL FREE  
1-800-222-1141

Ohio 1-800-338-5608

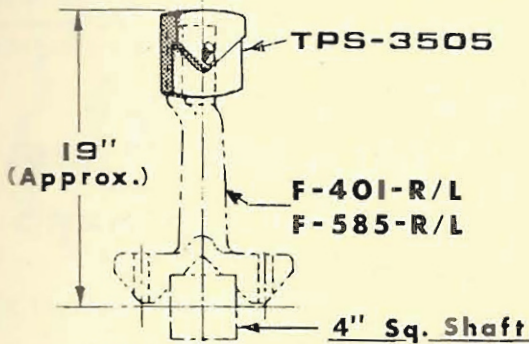
FAX 216-524-5682

Telephone 216-524-7100

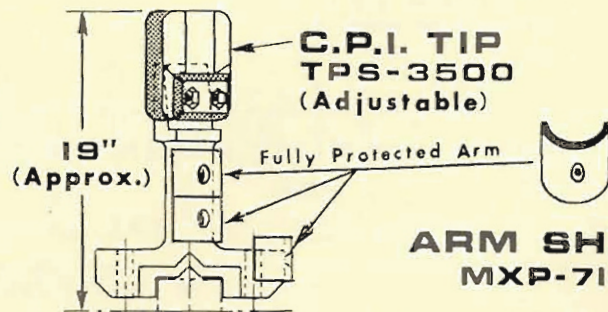
AVAILABLE REPLACEMENT PARTS  
FOR  
C.M.I.(SIMPLICITY) PLANTS

## MIXER TIPS/ARMS

(4,000 LB. THRU  
12,000 LB. MIXERS)



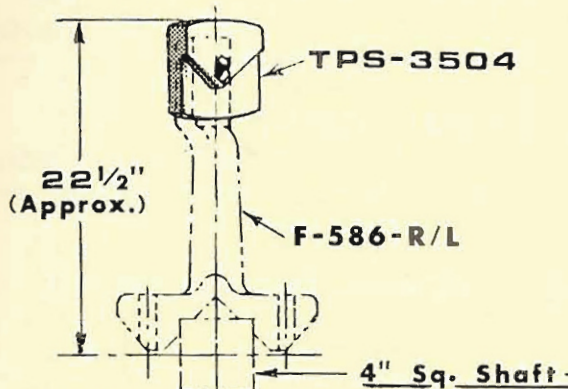
CMI (Simplicity) ARM  
w/C.P.I. TIP



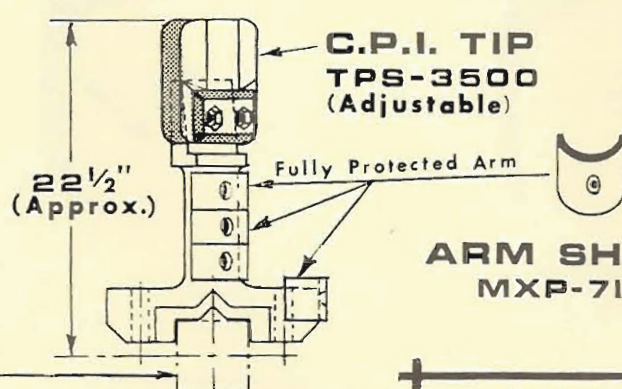
C.P.I. ARM  
SHK-3803-R/L  
(Alternate)

ARM SHIELD  
MXP-7146

4,000/5,000 Lb.  
Mixer Arms/Tips



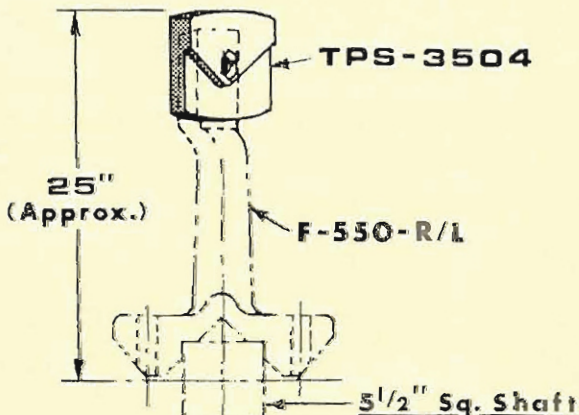
CMI (Simplicity) ARM  
w/C.P.I. TIP



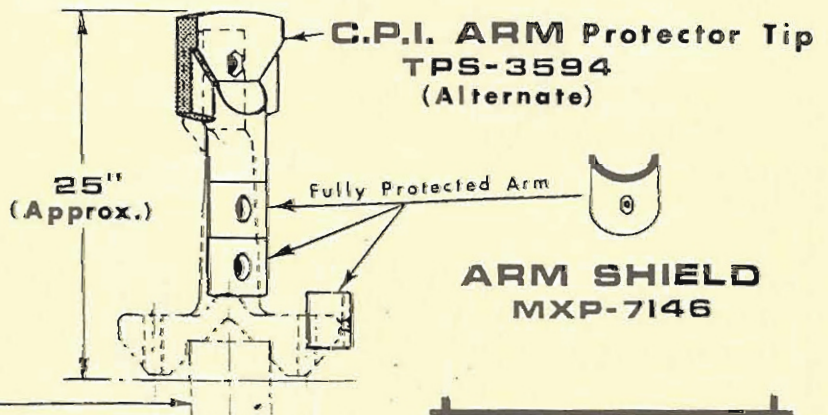
C.P.I. ARM  
SHK-3474-R/L  
(Alternate)

ARM SHIELD  
MXP-7146

6,000 Lb.  
Mixer Arms/Tips



CMI (Simplicity) ARM  
w/C.P.I. TIP



C.P.I. ARM  
SHK-3438-R/L  
(Alternate)

ARM SHIELD  
MXP-7146

10,000/12,000 Lb.  
Mixer Arms/Tips

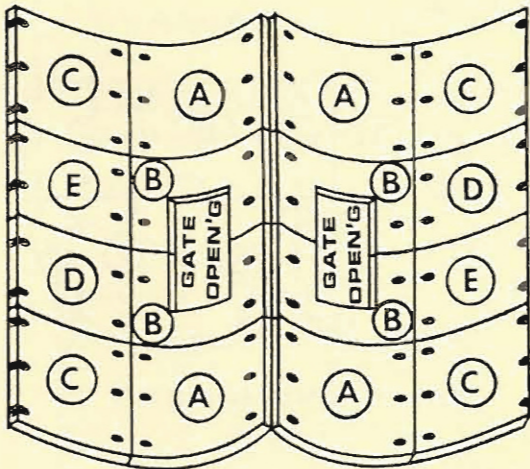
"YOUR HEADQUARTERS FOR ASPHALT PLANT REPLACEMENT PARTS"

ORDER BY PHONE **TOLL FREE 1-800-222-1141**  
Ohio 1-800-338-5608  
FAX 216-524-5682 Telephone 216-524-7100

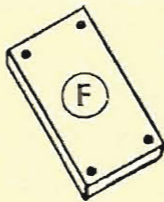
AVAILABLE REPLACEMENT PARTS FOR C.M.I.(SIMPLICITY) PLANTS

**MIXER LINERS**  
**4,000/5,000 LB. MIXERS**  
**MODEL No. S-75; S-80**

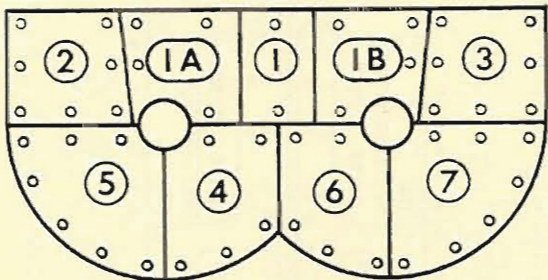
**MATERIAL: NI-HARD**



**SHELL LINERS**



**GATE LINERS**



**SPLIT END LINERS**

REF.	C.P.I. PART NO.	PART DESCRIPTION	REPLACEMENT FOR O.E.M. PART NO.
A	LNR-2710	Shell Liner	MX-115 314-00513-0000
B	LNR-2668	Gate Opening Liner	MX-117
C	LNR-2709	Shell Liner	MX-114 314-00512-0000
D	LNR-2711-L	Shell Liner	MX-116-L
E	LNR-2711-R	Shell Liner	MX-116-R
F	LNR-2661	Gate Liner	MX-38
1	LNR-2687	Upper Center End Liner	} MAKE-UP MX-50 236-00001-0000
1A	LNR-2687-L1	Upper Left Center End Liner	
1B	LNR-2687-R1	Upper Right Center End Liner	
2	LNR-2687-L2	Upper Left Corner End Liner	MX-6-L 236-00003-0000
3	LNR-2687-R2	Upper Right Corner End Liner	MX-6-R 236-00002-0000
4	LNR-2686-L1	Bottom Left Center End Liner	} MAKE-UP MX-35-L 314-00501-0000
5	LNR-2686-L2	Bottom Left Corner End Liner	
6	LNR-2686-R1	Bottom Right Center End Liner	} MAKE-UP MX-35-R 314-00502-0000
7	LNR-2686-R2	Bottom Right Corner End Liner	



ORDER  
BY PHONE

TOLL FREE

1-800-222-1141

Ohio 1-800-338-5608

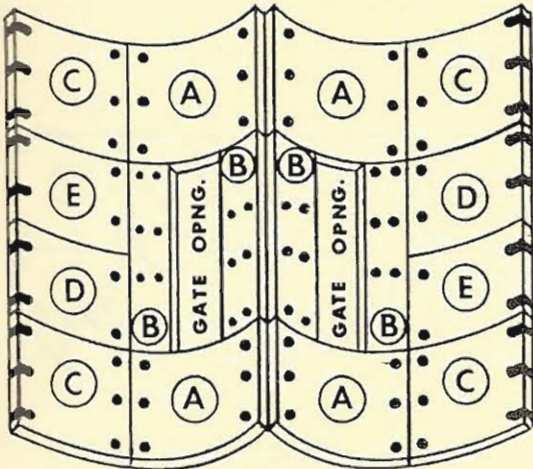
FAX 216-524-5682

Telephone 216-524-7100

AVAILABLE REPLACEMENT PARTS  
FOR  
C.M.I.(SIMPLICITY) PLANTS

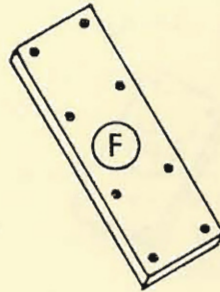
**MIXER LINERS**

**5,000 LB. MIXERS**

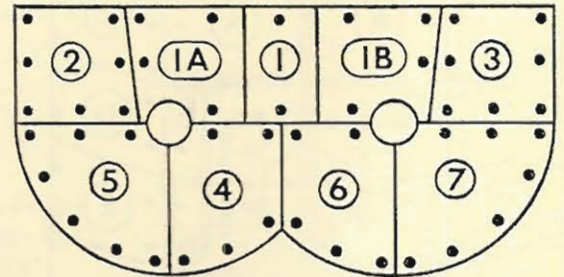


**SHELL LINERS**

**MATERIAL: NI-HARD**



**GATE LINERS**



**SPLIT END LINERS**

REF.	C.P.I. PART No.	PART DESCRIPTION	REPLACEMENT FOR O.E.M. PART No.
A	LNR-2710	Shell Liner	MX-115 314-00513-0000
B	LNR-2666	Gate Opening Liner	MX-130 314-00520-0000
C	LNR-2709	Shell Liner	MX-114 314-00512-0000
D	LNR-2711-L	Shell Liner	MX-116-L
E	LNR-2711-R	Shell Liner	MX-116-R
F	LNR-2667	Gate Liner	MX-129
1	LNR-2687	Upper Center End Liner	} MAKE-UP MX-50
1A	LNR-2687-L1	Upper Left Center End Liner	
1B	LNR-2687-R1	Upper Right Center End Liner	
2	LNR-2687-L2	Upper Left Corner End Liner	MX-6-L 236-00003-0000
3	LNR-2687-R2	Upper Right Corner End Liner	MX-6-R 236-00002-0000
4	LNR-2686-L1	Bottom Left Center End Liner	} MAKE-UP MX-35-L 314-00501-0000
5	LNR-2686-L2	Bottom Left Corner End Liner	
6	LNR-2686-R1	Bottom Right Center End Liner	} MAKE-UP MX-35-R 314-00502-0000
7	LNR-2686-R2	Bottom Right Corner End Liner	

# C ONSTRUCTION P ARTS I NC.®



ORDER  
BY PHONE

**TOLL FREE**  
**1-800-222-1141**

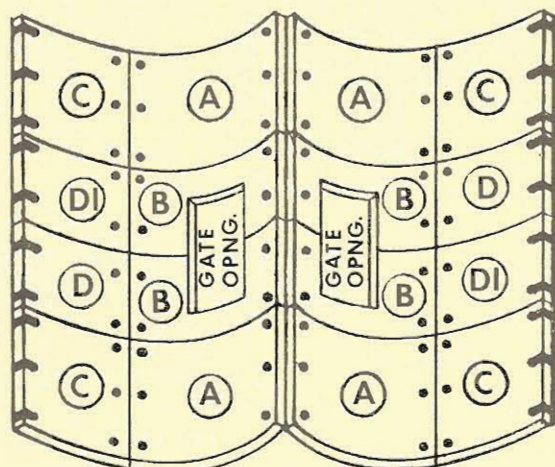
Ohio 1-800-338-5608

FAX 216-524-5682

Telephone 216-524-7100

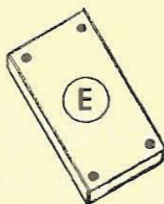
AVAILABLE REPLACEMENT PARTS  
FOR  
C.M.I.(SIMPLICITY) PLANTS

**MIXER LINERS**  
**6,000 LB. MIXER**

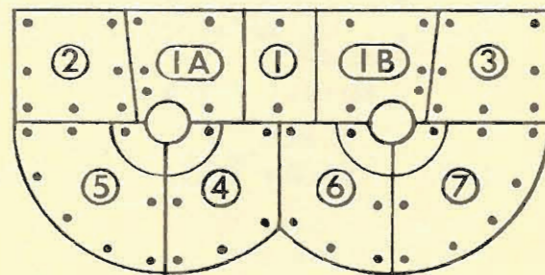


**SHELL LINERS**

**MATERIAL: NI-HARD**



**GATE LINERS**



**SPLIT END LINERS**

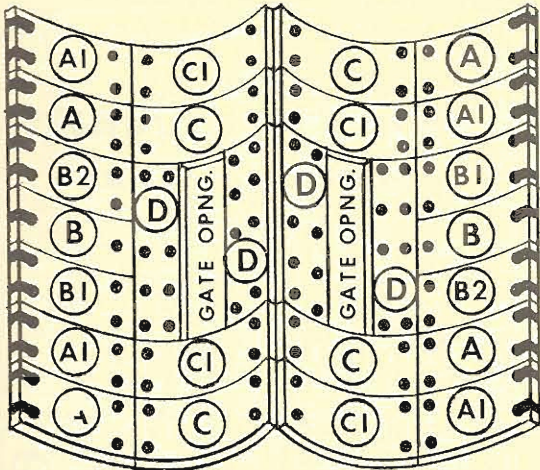
REF.	C.P.I. PART No.	PART DESCRIPTION	REPLACEMENT FOR O.E.M. PART No.
A	LNR-2664	Shell Liner	MX-103
B	LNR-2662	Gate Opening Liner	MX-104
C	LNR-2665	Shell Liner	MX-101
D	LNR-2663-L	Split Shell Liner } Split Shell Liner }	MAKE-UP MX-102
D1	LNR-2663-R		
E	LNR-2661	Gate Liner	MX-38
1	LNR-2747	Upper Center End Liner	MAKE-UP MX-106
1A	LNR-2747-L1	Upper Left Center End Liner	
1B	LNR-2747-R1	Upper Right Center End Liner	
2	LNR-2747-L2	Upper Left Corner End Liner	MX-105-L
3	LNR-2747-R2	Upper Right Corner End Liner	MX-105-R
4	LNR-2746-L1	Bottom Left Center End Liner	MAKE-UP MX-107-L
5	LNR-2746-L2	Bottom Left Corner End Liner	
6	LNR-2746-R1	Bottom Right Center End Liner	MAKE-UP MX-107-R
7	LNR-2746-R2	Bottom Right Corner End Liner	

"YOUR HEADQUARTERS FOR ASPHALT PLANT REPLACEMENT PARTS"

ORDER BY PHONE **TOLL FREE** 1-800-222-1141  
Ohio 1-800-338-5608  
FAX 216-524-5682 Telephone 216-524-7100

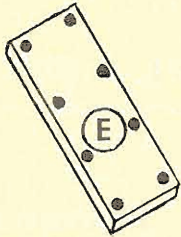
AVAILABLE REPLACEMENT PARTS  
FOR  
C.M.I.(SIMPLICITY) PLANTS

**MIXER LINERS**  
**8,000 LB. MIXER**

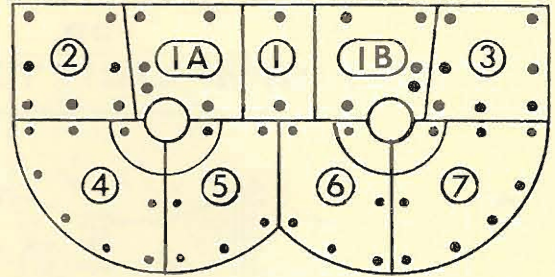


**SHELL LINERS**

**MATERIAL: NI-HARD**



**GATE LINERS**



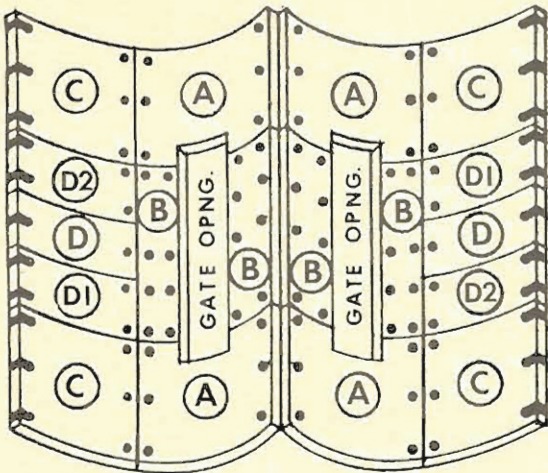
**SPLIT END LINERS**

REF.	C.P.I. PART No.	PART DESCRIPTION	REPLACEMENT FOR O.E.M. PART No.
A	LNR-2751-L	Split Shell Liner	MAKE-UP MX-108 (314-00509-0000)
A1	LNR-2751-R		
B	LNR-2749-C	Split Shell Liner	MAKE-UP MX-109 (314-00510-0000)
B1	LNR-2749-L		
B2	LNR-2749-R		
C	LNR-2752-L	Split Shell Liner	MAKE-UP MX-110
C1	LNR-2752-R		
D	LNR-2742	Gate Opening Liner	5-MX-60 (314-00524-0000)
E	LNR-2743	Gate Liner	5-MX-38-A (314-00523-0000)
1	LNR-2750	Upper Center End Liner	MAKE-UP 5-MX-50 (236-00021-0000)
1A	LNR-2750-L1	Upper Left Center End Liner	
1B	LNR-2750-R1	Upper Right Center End Liner	
2	LNR-2750-L2	Upper Left Corner End Liner	5-MX-6L (236-00019-0000)
3	LNR-2750-R2	Upper Right Corner End Liner	5-MX-6R (236-00020-0000)
4	LNR-2738	Bottom Left End Liner	MX-131-L (5-MX-35-L) (314-00530-0000)
5	LNR-2737	Bottom Left Center End Liner	MX-132-L (5-MX-35-L) (314-00532-0000)
6	LNR-2739	Bottom Right Center End Liner	MX-132-R (5-MX-35-R) (314-00533-0000)
7	LNR-2740	Bottom Right End Liner	MX-131-R (5-MX-35-R) (314-00531-0000)

ORDER BY PHONE  
TOLL FREE  
**1-800-222-1141**  
Ohio 1-800-338-5608  
FAX 216-524-5682 Telephone 216-524-7100

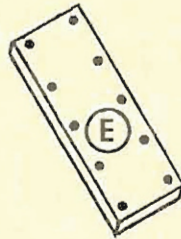
AVAILABLE REPLACEMENT PARTS  
FOR  
C.M.I.(SIMPLICITY) PLANTS

**MIXER LINERS**  
**10,000 LB. MIXER**

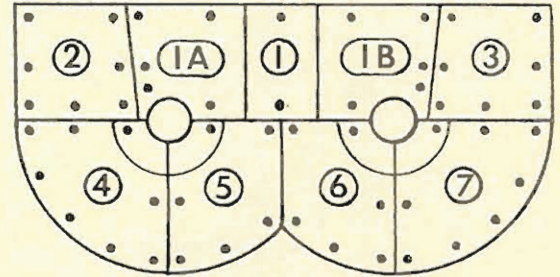


**SHELL LINERS**

**MATERIAL: NI-HARD**



**GATE LINERS**



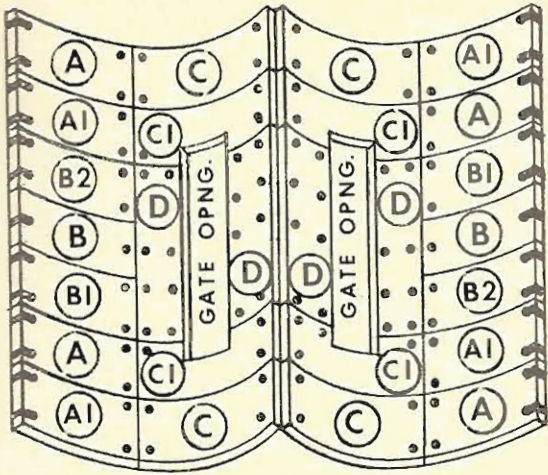
**SPLIT END LINERS**

REF.	C.P.I. PART No.	PART DESCRIPTION	REPLACEMENT FOR O.E.M. PART No.
A	LNR-2741	Shell Liner	MX-133 (314-00534-0000)
B	LNR-2742	Gate Opening Liner	5-MX-60 (314-00524-0000)
C	LNR-2748	Shell Liner	MX-134 (314-00535-0000)
D	LNR-2749-C	Split Shell Liner } Split Shell Liner } Split Shell Liner }	MAKE-UP MX-109 (314-00510-0000)
D1	LNR-2749-L		
D2	LNR-2749-R		
E	LNR-2743	Gate Liner	5-MX-38-A (314-00523-0000)
1	LNR-2750	Upper Center End Liner } Upper Left Center End Liner } Upper Right Center End Liner }	MAKE-UP 5-MX-50 (236-00021-0000)
1A	LNR-2750-L1		
1B	LNR-2750-R1		
2	LNR-2750-L2	Upper Left Corner End Liner	5-MX-6L (236-00019-0000)
3	LNR-2750-R2	Upper Right Corner End Liner	5-MX-6R (236-00020-0000)
4	LNR-2738	Bottom Left End Liner	MX-131-L (5-MX-35-L) (314-00530-0000)
5	LNR-2737	Bottom Left Center End Liner	MX-132-L (5-MX-35-L) (314-00532-0000)
6	LNR-2739	Bottom Right Center End Liner	MX-132-R (5-MX-35-R) (314-00533-0000)
7	LNR-2740	Bottom Right End Liner	MX-131-R (5-MX-35-R) (314-00531-0000)

ORDER BY PHONE **TOLL FREE 1-800-222-1141**  
Ohio 1-800-338-5608  
FAX 216-524-5682 Telephone 216-524-7100

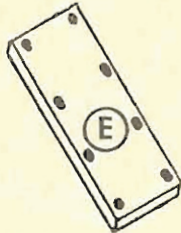
AVAILABLE REPLACEMENT PARTS  
FOR  
C.M.I.(SIMPLICITY) PLANTS

**MIXER LINERS**  
**12,000 LB. MIXER**

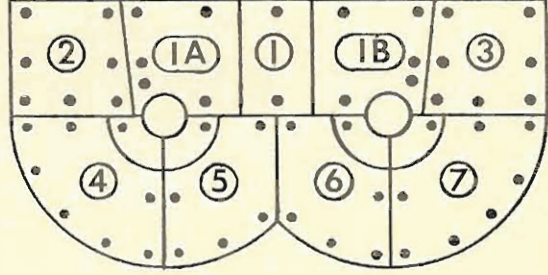


**SHELL LINERS**

**MATERIAL: NI-HARD**



**GATE LINERS**



**SPLIT END LINERS**

REF.	C.P.I. PART No.	PART DESCRIPTION	REPLACEMENT FOR O.E.M. PART No.
A	LNR-2751-R	Split Shell Liner	MAKE-UP MX-108 (314-00509-0000)
A1	LNR-2751-L		
B	LNR-2749-C	Split Shell Liner	MAKE-UP MX-109 (314-00510-0000)
B1	LNR-2749-L		
B2	LNR-2749-R		
C	LNR-2753-A	Split Shell Liner	MAKE-UP MX-127 (314-00519-0000)
C1	LNR-2753-B		
D	LNR-2742	Gate Opening Liner	5-MX-60 (314-00524-0000)
E	LNR-2743	Gate Liner	5-MX-38-A (314-00523-0000)
1	LNR-2750	Upper Center End Liner	MAKE-UP 5-MX-50 (236-00021-0000)
1A	LNR-2750-L1	Upper Left Center End Liner	
1B	LNR-2750-R1	Upper Right Center End Liner	
2	LNR-2750-L2	Upper Left Corner End Liner	5-MX-6L (236-00019-0000)
3	LNR-2750-R2	Upper Right Corner End Liner	5-MX-6R (236-00020-0000)
4	LNR-2738	Bottom Left End Liner	MX-131-L (5-MX-35-L) (314-00530-0000)
5	LNR-2737	Bottom Left Center End Liner	MX-132-L (5-MX-35-L) (314-00532-0000)
6	LNR-2739	Bottom Right Center End Liner	MX-132-R (5-MX-35-R) (314-00533-0000)
7	LNR-2740	Bottom Right End Liner	MX-131-R (5-MX-35-R) (314-00531-0000)



# C ONSTRUCTION P ARTS I NC.®



ORDER  
BY PHONE

TOLL FREE  
1-800-222-1141

Ohio 1-800-338-5608

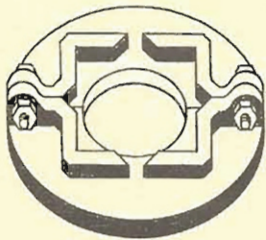
FAX 216-524-5682

Telephone 216-524-7100

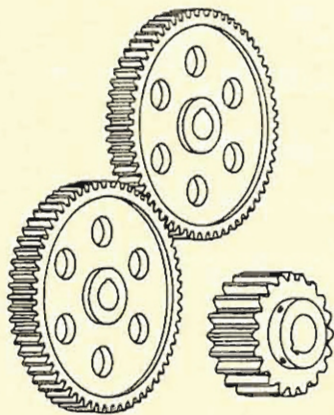
AVAILABLE REPLACEMENT PARTS  
FOR  
C.M.I.(SIMPLICITY) PLANTS

## MIXER PARTS

### MIXER END WASHERS



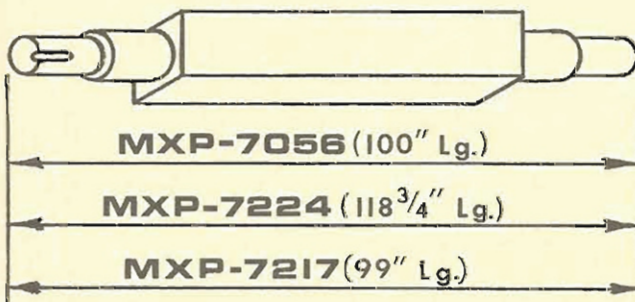
C.P.I. PART NO.	PART DESCRIPTION	REPLACEMENT FOR O.E.M. PART NO.
MXP-7164	End Washer	601 (136-00050-0000)
MXP-7198	End Washer	602 (136-00051-0000)



### MIXER GEARS

C.P.I. PART NO.	PART DESCRIPTION	REPLACEMENT FOR O.E.M. PART NO.
TRP-255	Mixer Gear-58 Tooth	308-01502-0000
TRP-256	Pinion Gear-21 Tooth	308-01515-0050
TRP-257	Mixer Gear-62 Tooth	308-01501-0000

### MIXER SHAFTS



C.P.I. PART NO.	PART DESCRIPTION	REPLACEMENT FOR O.E.M. PART NO.
MXP-7056	Mixer Shaft	36A4
MXP-7224	Mixer Shaft	36A17
MXP-7217	Mixer Shaft	SD-338 (136-00004-0000)

"YOUR HEADQUARTERS FOR ASPHALT PLANT REPLACEMENT PARTS"